

HOW TO ACHIEVE A MORE EFFICIENT AND PRODUCTIVE SALESFORCE ENVIRONMENT?



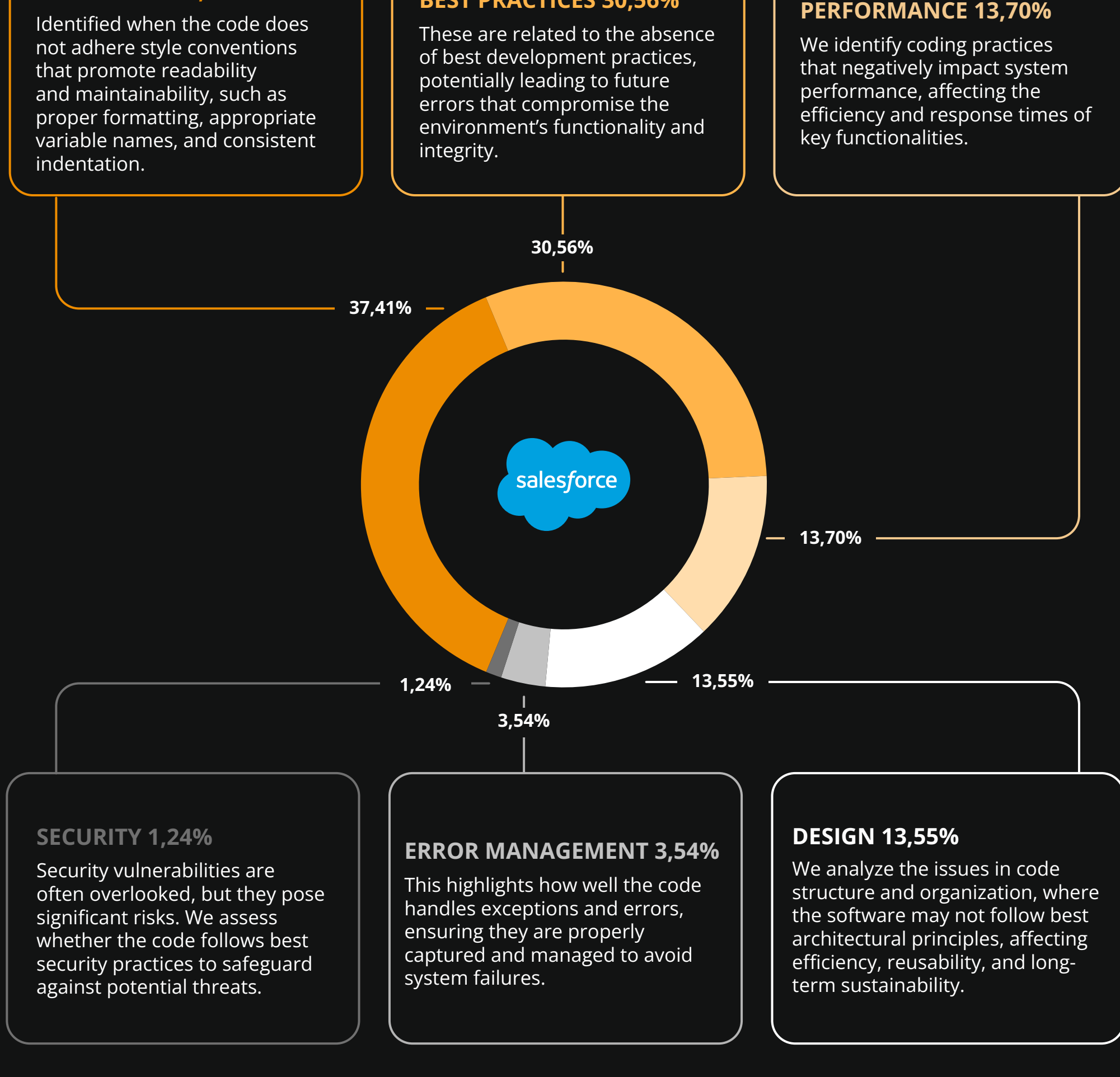
WHAT IS THE PURPOSE OF THIS MATERIAL?

With over a decade of experience conducting technical audits on Salesforce environments across various configurations, industries, and company sizes, we've gathered a wealth of insights. This material is a culmination of our findings, offering a comprehensive overview of the most common issues and challenges faced by Salesforce users.

Rather than being a definitive guide, this resource is designed to help you identify frequent non-conformities that could be present in your Salesforce environment. Ready to dive in?

Where are the most common problems in Salesforce environments?

In the chart below, we've categorized the most frequent non-conformities found during our audits:



CODE STYLE 37,41%

Identified when the code does not adhere style conventions that promote readability and maintainability, such as proper formatting, appropriate variable names, and consistent indentation.

BEST PRACTICES 30,56%

These are related to the absence of best development practices, potentially leading to future errors that compromise the environment's functionality and integrity.

PERFORMANCE 13,70%

We identify coding practices that negatively impact system performance, affecting the efficiency and response times of key functionalities.

SECURITY 1,24%

Security vulnerabilities are often overlooked, but they pose significant risks. We assess whether the code follows best security practices to safeguard against potential threats.

ERROR MANAGEMENT 3,54%

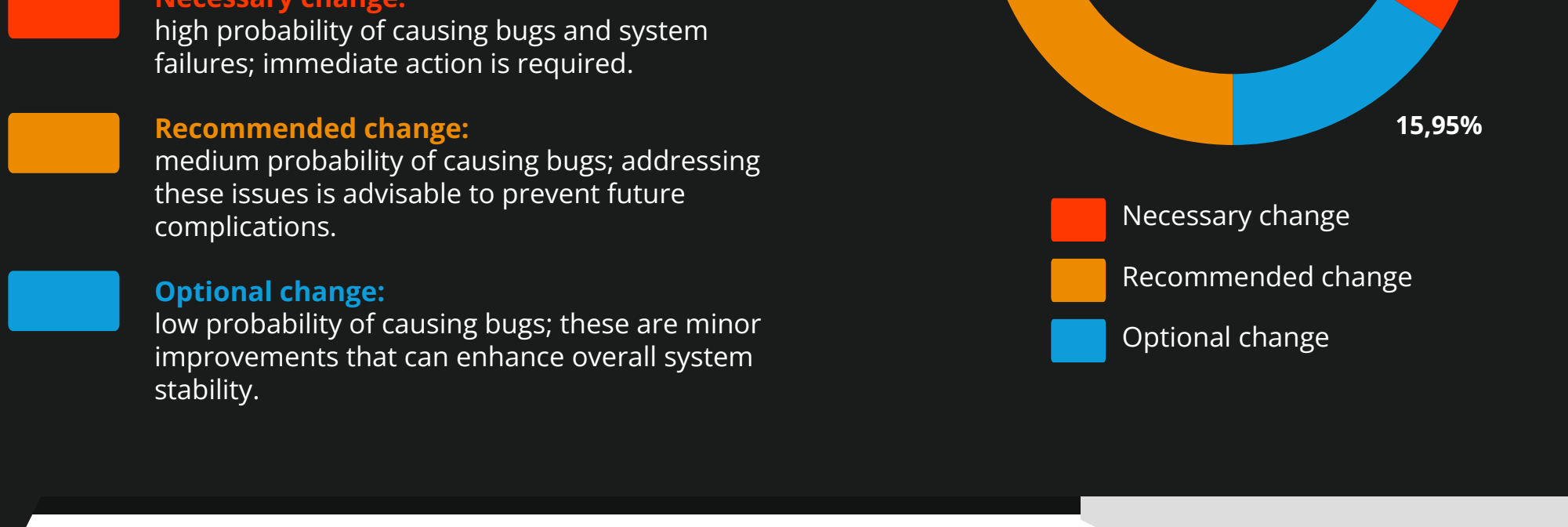
This highlights how well the code handles exceptions and errors, ensuring they are properly captured and managed to avoid system failures.

DESIGN 13,55%

We analyze the issues in code structure and organization, where the software may not follow best architectural principles, affecting efficiency, reusability, and long-term sustainability.

Severity of the problems found

In the adjacent graph, we categorized the non-conformities based on their severity:



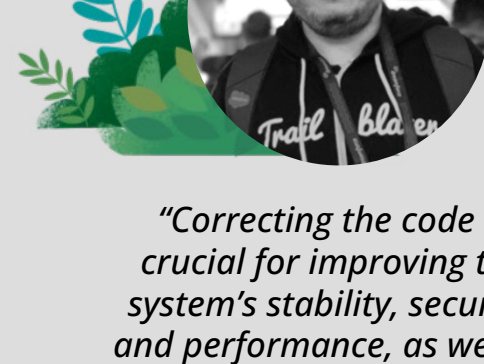
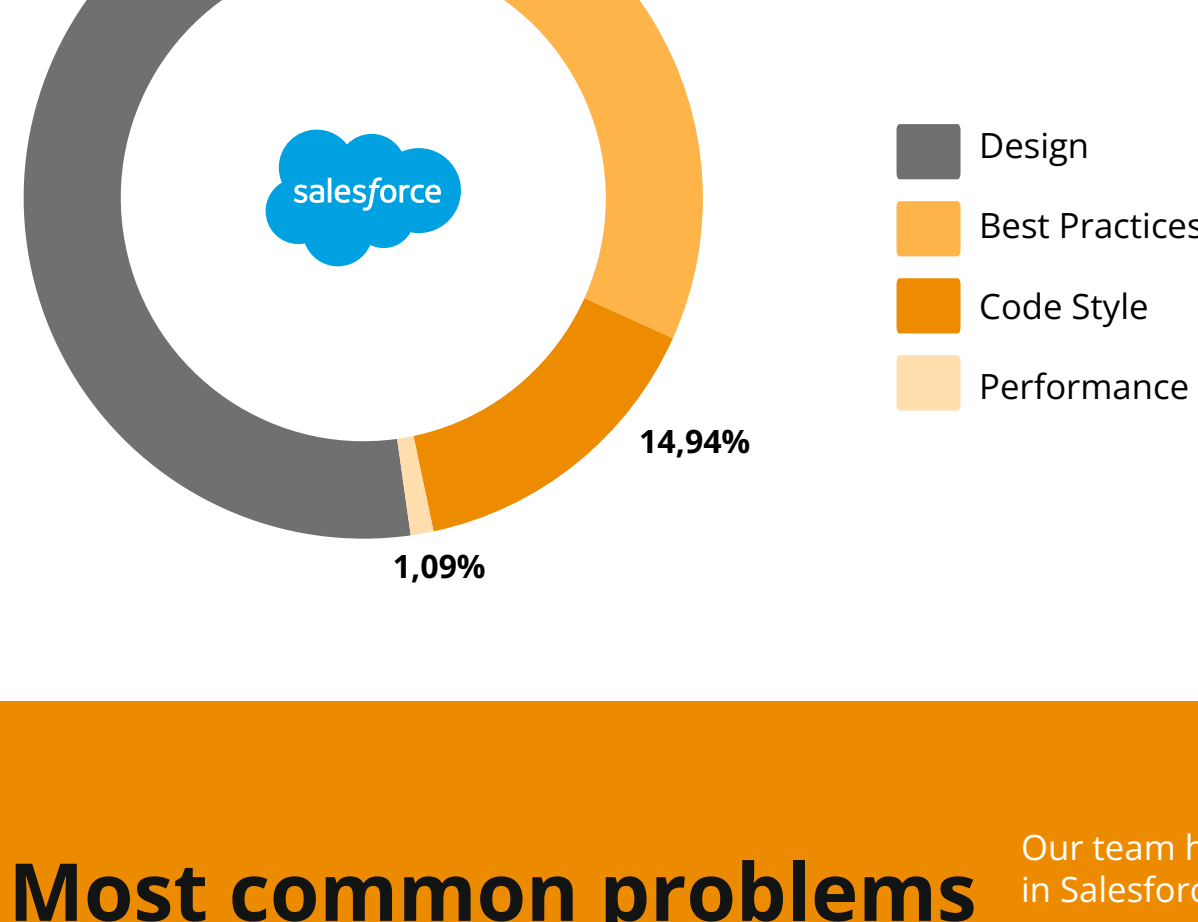
Necessary change: high probability of causing bugs and system failures; immediate action is required.

Recommended change: medium probability of causing bugs; addressing these issues is advisable to prevent future complications.

Optional change: low probability of causing bugs; these are minor improvements that can enhance overall system stability.

Where are the necessary changes?

Based on the information above, we've identified the most critical non-conformities that require urgent correction. These issues have the highest severity, meaning they pose the greatest risk to your Salesforce environment's functionality. Below is the breakdown by category:



"Correcting the code is crucial for improving the system's stability, security, and performance, as well as facilitating its maintenance. By adopting best practices and making improvements in design and performance, you ensure a more efficient, reliable, and high-quality application."

Rafael Colatusso | Senior Solutions Engineer at BRQ

Most common problems

Our team has identified several prevalent non-conformities in Salesforce environments, along with their potential consequences:

UNUSED LOCAL VARIABLES

These can cause confusion and complicate maintenance by obscuring the code's intent. They also increase the risk of errors and negatively impact performance. By removing unused variables, you can enhance code quality and clarity, reduce confusion, and minimize the likelihood of future errors. This practice contributes to ongoing code maintenance and improvement.

PROPERTY NAMING CONVENTIONS

Inconsistent naming conventions can create confusion and complicate maintenance efforts, leading to diminished code quality. Adhering to clear naming conventions enhances code readability and understandability, promotes better collaboration among developers, and facilitates long-term maintenance.

CYCLOMATIC COMPLEXITY

High cyclomatic complexity can lead to difficulties in testing, maintaining, and understanding code, ultimately resulting in poor code quality.

COGNITIVE CYCLOMATIC COMPLEXITY

This refers to the challenges developers face in understanding complex code structures. It can hinder training and onboarding for new team members, complicate refactoring and maintenance, and pose difficulties in testing and debugging.



"Continuous development practices grounded in scalable architecture, industry standards, ongoing refactoring, and modularization significantly reduce errors and complexities. These approaches enhance the overall quality and maintainability of the code while boosting team productivity."

Oseas Tormen | Salesforce Architecture Manager at BRQ

Introducing OrgScan AI: your comprehensive technical audit for Salesforce environments

Unlock valuable insights into your Salesforce environment with OrgScan AI, a powerful tool that merges our proven methodology and a expertise with the capabilities of Artificial Intelligence. This innovative approach allows us to conduct an in-depth analysis of your system.

We provide a thorough and tailored scan of your Salesforce environment using advanced automated AI tools. With our extensive experience as one of the first Salesforce partners in Brazil, our team is well-equipped to carry out this detailed assessment. We deliver a comprehensive optimization plan, outlining actionable steps to enhance your environment, all set for on-demand execution.

METADATA DOWNLOAD

AUTOMATED ANALYSIS

HUMAN ANALYSIS

EVOLUTION ROADMAP

Benefits of OrgScan

11X

faster analysis

96,75%

accuracy in AI analysis

100%

data protection

Custom reports on your Organization's Environment Health, enhancing decision-making

Learn more about ORGSCAN AI

brq.com/en/orgscan

What do our clients say about OrgScan?



"Implementing strategic projects in Salesforce is not possible without a detailed understanding of the environment. OrgScan is a robust tool that provides this detailed view, performing an X-ray, demonstrating the quality of the org with details of items (triggers, hard codes, lack of good coding practices, etc.), giving us the ability of which components require attention to ensure the org remains scalable in a sustainable way."

Ana Bertoldi | Electrolux

"Truly a complete check-up of the health of our Salesforce clouds, with the bonus of a diagnosis on how to maintain a complete and healthy environment. A real guide for the best path forward."

João Folhadella | Nissan



Fusion AI Platform: accelerating the potential of Generative AI in your organization

OrgScan AI is powered by Fusion, BRQ's scalable multi-AI platform. With Fusion, you have access to modules and accelerators that can transform your organization's daily operations through Generative AI.

There are over 20 successful cases of Fusion in organizations across various sectors.

- ▶ Accelerate software development by up to 50%
- ▶ Automate technical documentation and code analysis
- ▶ Gain speed in data analysis with over 90% accuracy
- ▶ Reduce time spent on routine and complex tasks
- ▶ Create personalized experiences and increase customer satisfaction

[Learn more about Fusion AI Platform](#)

